



# The Compassionate Friends of Tallahassee

<http://www.tcftallahassee.com>

V. 1 No. 1

Sept. 2007

## Steering Committee

Chapter Leader Becky Barch  
Co-Leader Sheila Ryan  
Secretary Janice Mazza  
Treasurer Gary Matthews  
Newsletter Janice Mazza  
Outreach (volunteer needed)

## Monthly Meetings

Every 2<sup>nd</sup> Monday; 7:00 P.M.  
St. Stephen Lutheran Church  
2198 N. Meridian Rd.  
Tallahassee, FL

It takes courage to come to the first meeting. Bring a friend or relative if you wish. You will find it is all right to laugh or cry, to share exactly how you feel or say nothing at all. You are not alone and we understand.

## Donations

☞ Shiela and Bill Ryan in memory of Will Ryan  
☞ Becky and Doug Barch in memory of Jonathan Barch  
☞ Janice and Nick Mazza in memory of Christopher Mazza  
☞ Gary and Tammy Spikes in memory of Tiffany Miranda Spikes  
☞ Marie Primas-Bradshaw in memory of Sylvia Marie Robinson

## Wish List

Small apartment sized refrigerator  
Small T.V. and VCR

## Volunteers

Needed..... an Outreach volunteer to send correspondence to newly bereaved families.

TCF is a self-help organization offering friendship and understanding to bereaved parents and siblings.

"I feel like someone just put their hand in my chest and ripped my heart out!" ☞ This expression of grief describes the agony parents feel with the death of their child. Perhaps nothing is more devastating or painful than the death of a child-one who represents life and vitality, who brings us face to face with our mortality and limitations, causing deep feelings of anxiety and powerlessness. Such experiences are so threatening that most parents initially feel they will not survive them. An unknown author once wrote: "When you lose your parent, you lose your past. When you lose your child, you lose your future." When a person comes face to face with death, what used to work, does not; what used to be important, is not. What, then, does help? Grieving is what helps!

*Supportive Voice Vol. 7 No. 2 Spring 2001--* by Mary Ann Collins, MSHA, and Sr. Judith Carron, RSM

## Upcoming Events!

### **You're Invited to a Pampered Chef Fundraising Party**

We're having a Pampered Chef Party Fundraiser! (Yes, the guys are invited!) Invite relatives, friends and co-workers to come to the party or [click here](#) to make purchase online between: Saturday October 13, 2007 through Mon, Nov 5, 2007.

**When:** Sat, October 13, 2007  
2:00 – 4:00 PM

**Where:** St. Stephen's Lutheran Church Fellowship Hall  
2198 N Meridian Rd, Tallahassee, FL

Call the office at (850) 422-8404 or send an email to [tcfot@yahoo.com](mailto:tcfot@yahoo.com) to receive a Pampered Chef fundraising catalogue to help TCF of Tallahassee raise money to fund the following services to the community!

- Compassionate Friends Events (Family Picnics, Meeting Refreshments, etc.)
- Publicity and Promotional Items (postage, T-shirts, signage, etc.)
- Printed Materials and Resource Information (brochures, newsletters, Web site)
- Condolence and Remembrance Cards
- Annual Candle lighting Ceremony

### **TCF December Candle Lighting**

The annual Compassionate Friends Worldwide Candle Lighting in memory of all children that have died will be held Sunday, December 10<sup>th</sup>, 7:00 P.M. at **Big Bend Hospice** • 1723 Mahan Center Blvd. • Tallahassee, Florida 32308-5428.

### **Service of Remembrance sponsored by Big Bend Hospice**

November 19, 2006, 6:30 P.M. at Tallahassee Mall In The Food Court.

## **....that their light may always shine!**

Held annually the second Sunday in December, this year December 9, The Compassionate Friends Worldwide Candle Lighting unites family and friends around the globe in lighting candles for one hour to honor and remember children who have died at any age from any cause. As candles are lit at 7 p.m. local time, hundreds of thousands of persons commemorate and honor children in a way that transcends all ethnic, cultural, religious, and political boundaries.

The Worldwide Candle Lighting is a gift from The Compassionate Friends to the bereavement community allowing us all to join together in unity to remember and honor the memories of all children so they may never be forgotten.

Believed to be the largest mass candle lighting on the globe, the Worldwide Candle Lighting creates a virtual 24-hour wave of light as it moves from time zone to time zone. Hundreds of formal candle lighting events are held and thousands of informal candle lightings are conducted in homes as families gather in quiet remembrance of special children to always be remembered.

The Worldwide Candle Lighting started in the United States in 1997 as a small Internet observance but, as it has been embraced by the bereavement community, has swelled in numbers as word has spread throughout the world of the remembrance. A memorial message board is available during the event at TCF's USA website <http://www.compassionatefriends.org/>. Thousands of postings are received each year from all over the United States, as well as dozens of other countries, with many messages in foreign languages.

Here in the United States, publicity about the event is widespread, being featured in the past in *Parade Magazine*, Ann Landers column, *Guideposts* magazine, *Annie's Mailbox*, and literally hundreds of U.S. newspapers, dozens of television stations, and numerous websites. Information on the Worldwide Candle Lighting and planned memorial candle lighting services is posted on the TCF website at <http://www.compassionatefriends.org/> each year as the event nears.

For many of the years of the Worldwide Candle Lighting, the United States Senate has joined in its observance through the unanimous passage of resolutions declaring the second Sunday in December National Children's Memorial Day. TCF/USA appreciates our government's understanding of what the Worldwide Candle Lighting means to so many.

The Worldwide Candle Lighting gives bereaved families everywhere the opportunity to remember their child

**. . . that their light may always shine!**

The Compassionate Friends publishes the following pamphlets on understanding the grief of families following the death of a child:

<http://www.compassionatefriends.org/Brochures/brochures.html>

**When a Child Dies...TCF Can Help**

[Understanding Grief...When a Child Dies \(Available in Spanish\)](#)

[Caring for Surviving Children](#)

[When a Brother or Sister Dies](#)

[Stillbirth, Miscarriage and Infant Death](#)

[Surviving Your Child's Suicide](#)

[The Death of an Adult Child](#)

[Parents Who Are Now Childless](#)

[The Grief of Grandparents](#)

[The Grief of Stepparents](#)

[How Can I Help?](#)

[Suggestions for Medical Personnel](#)

[Suggestions for Clergy](#)

[Suggestions for Teachers & School Counselors](#)

[Suggestions for Funeral Directors](#)

[For First Responders: Dealing with the Sudden Death of a Child](#)

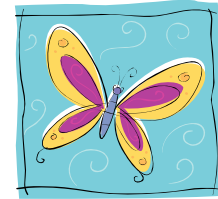
[When a Law Officer Responds to the Death of a Child](#)

[When an Employee Is Grieving](#)

[When a Co-Worker Is Grieving](#)

## *Remembering Sylvia Marie*

**S** sweet  
**Y** young  
**L** lovable  
**V** vivacious  
**I** intelligent  
**A** angelic  
  
**M** merry  
**A** attractive  
**R** right-handed  
**I** interesting  
**E** engaging



In loving memory  
Marie Primas-Bradshaw

### **TCF Library**

Checkout books and materials from our library. If you have suggestions or would like to donate a book to the collection let us know.

Please submit articles/ideas for the newsletter to:

Janice Mazza ([mazzaja@comcast.net](mailto:mazzaja@comcast.net)) Our next newsletter will be published in December. Please let us know if you find any errors.

Pamphlets ("Suggestions for Funeral Directors") were sent to all funeral homes in Tallahassee and the surrounding communities.

### **Choices**

We have no choice in our child's death, but we do have a choice in how we respond. How we react long-term is a memorial to our child.

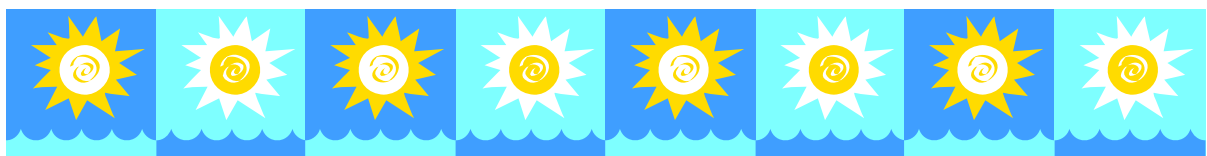
We need never forget our sons and daughters. We will feel their loss painfully at different times throughout our lives, but we can learn to value what we have now and gain from our pain.

Taken from "Support Net: The Loss of a Child: Parent's grief"

## In Memory of our Children September - November

Child	Date of Birth	Date of Death
Anjarika Larika Knight	September 4	
David William Burns	September 11	
John David Pollock	September 12	
Paul David Bussey	September 16	
Daniel Carl Ackerman	September 19	September 19
Sammy Mobley	September 21	
Lon (Lonnie) Kitzmiller	September 22	
Stephanie Renee Morgan	September 22	
Kenneth (Kenny) A Stevenson	September 29	
Lance Redman	September 28	
Michael Parsons	September 29	September 29
Debra Landreth	September 30	September 14
Gustaf (Gus) Ames Barineau		September 3
Kelly Slager		September 12
Chad T Roberts		September 15
Sylvia Marie Richardson		September 22
Robert I (Bobby) BoDee, Jr		September 27
David Edward Kinsey		September 28
Rick Powers		September 29
Joseph (Jessie) Correia	October 4	
Shawn DeLester Whaley	October 4	
Kevin Lloyd	October 5	
Robert Sean Gunn	October 12	
Sarah Elizabeth Cowling	October 16	
Andrew (Scott) Mathews	October 16	
Sara A Garretson	October 17	
William (Will) Aurthur Ryan	October 18	
Kathleen Oldenburg	October 19	October 19
Nicholas Danger Gallagher	October 20	October 20
Steven Patrick Piotrowski	October 24	
Jessie Thael	October 28	
Janna Lynn Songer	October 31	
Trace Boyd		October 4
Kari Lea Montford		October 5
Abraham Smith, Sr		October 6
Will Wright		October 6
Jody Michael Chambers		October 7
Kelly Lea Lawson		October 8
Rebecca (Becky) Tranchand		

Brooke Proehl		October 20
Anjarika Larika Knight		October 25
Kevin Lloyd		October 27
Stephanie Irene Louise Grantham		October 28
Eric Lynn Stafford		October 29
Chad T Roberts	November 1	
Abraham Smith, Jr	November 2	
Joel Gray Henry	November 2	
Jody Michael Chambers	November 2	
Rebecca (Becky) Tranchand	November 4	
Christopher Thomas Reed	November 7	
Joshua Taylor Martin	November 8	
Robert (Bobbie) I BoDee, Jr	November 12	
Benjamin (Shane) Bidwell	November 16	
Zelma Smith-Jordan	November 17	
Danny John Densmore	November 18	
Damien Scott Woods	November 22	
Emily Faglie	November 22	
Daniel (Danny) Brain Quakenbush	November 23	
Charles Douglas (Doug)Kirby	November 23	
Milton Johnson		November 1
Christoher John Mazza		November 1
Aimee Lewis		November 3
Richard (Ricky) Thompson		November 4
Kyle Davis Taylor		November 5
Jessie Thael		November 6
Donald Mathis		November 8
Michael Lindberg Hardy, Jr.		November 11
Joshua Taylor Martin		November 13
Luke Rigsby		November 13
Heather Amanda Brooks		November 17
Barbara (Dodie) Kever		November 20
Kenneth (Kenny) A. Stevenson		November 23
Suzie Meuller		November 23
Lance Redman		November 30



This newsletter was produced by Janice Mazza in loving memory of Christopher Mazza with contributions made by Marie Primas-Bradshaw.